

TOPWIN MINI EXCAVATOR CATALOGUE

Model	E08	E10	E16	E18	E20	E25	E30	E35
ENGINE								
Emission Standard	EURO V/ EPA engine	EURO V/ EPA engine	EURO V/ EPA engine	EURO V/ EPA engine	EURO V/ EPA engine	EURO V/ EPA engine	EURO V/ EPA engine	EURO V/ EPA engine
Make /Model	KOOP/B&S	KOOP/B&S	KUBOTA	LAIDONG/ KUBOTA	KUBOTA	LAIDONG/ KUBOTA	YANMAR/ KUBOTA	YANMAR/ KUBOTA
Power	7kw/9.9kw	7kw/9.9kw	11.8kw	18.8/14.1kw	14.1kw	18.8/14.1kw	20.5kw/ 18.2kw	20.5kw/ 18.2kw
Number of cylinder	1	1	3	3	3	3	4	4
TRACK SYSTEM								
Max. Travel speed	2.2km/h	1.9km/h	2km/h	3.5km/h	4km/h	3.5km/h	3.0/4.2 km/h	3.0/4.2 km/h
Width of track shoe	150mm	180mm	230mm	230mm	230mm	230mm	300mm	300mm
Number of bottom roller per side	2	2	3	4	3	4	4	4
PERFORMANCE								
Standard Bucket capacity	0.023m ³	0.023m ³	0.04m ³	0.06m ³	0.07m ³	0.1m ³	0.09m ³	0.09m ³
Swing speed	12 r/min	13 r/min	9 rpm	10~12 rpm	9 rpm	12rpm	8.5rpm	8.5rpm
Max. Grade ability	58%(30°)	58%(30°)	58%(30°)	35°	35°	58%(30°)	58%(30°)	58%(30°)
Max. Bucket digging force	7.5 KN	7.2 KN	13.8KN	14KN	18KN	15.3KN	26.5KN	26.5KN
Max. Arm digging force	/	4.6 KN	/	10KN	11KN	10.5KN	/	/
Hydraulic system pressure	18MPa	16MPa	16.5Mpa	18Mpa	21.5Mpa	18Mpa	21Mpa	21Mpa
Operating weight	800kg	920kg	1550kg	1780kg	2000kg	2300kg	3375kg	3515kg
MACHINE SIZE								
Overall dimension (L*W*H),mm	2600*820*2030	2840*880*2220	3300*1110*2360	3865*1050*2270	3555*990/1300*2290	4170*1300*2280	4485*1550*2440	4485*1550*2440
Track length	1140mm	1233mm	1450mm	1230mm	1230mm	1230mm	2100mm	2100mm
Track gauge	/	660mm	883mm	820mm	760mm	1070mm	1250mm	1250mm
Min. Ground clearance	80mm	132mm	/	210mm	150mm	230mm	290mm	290mm
Swing radius at tail	/	800mm	715mm	1125mm	650mm	1180mm	790mm	790mm
WORKING RANGE								
Max. Digging height	2560mm	2600mm	3310mm	3365mm	3700mm	3700mm	4600mm	4600mm
Max. Dumping height	1780mm	1830mm	2370mm	2385mm	2440mm	2290mm	3175mm	3175mm
Max. Digging depth	1000mm	1715mm	2120mm	2050mm	2400mm	2450mm	2880mm	2880mm
Max. Vertical digging depth		1590mm	1535mm	1725mm	2025mm	2160mm	2305mm	2305mm
Max. Digging radius	2575mm	3065mm	3570mm	3860mm	4040mm	4370mm	4965mm	4965mm
Min. swing radius	1100mm	1480mm	1660mm	1720mm	1610mm	2020mm	2035mm	2035mm
Max. Lifting height of blade	150mm	/	260mm	230mm	240mm	240mm	360mm	360mm
Max. Cutting depth of blade	100mm	/	190mm	275mm	270mm	310mm	340mm	340mm
Boom swing angle(Left/Right)	/	/	55°/53°	75°/45°	75°/45°	70°/50°	70°/50°	70°/50°

















Auger Drill



Raker



Ripper



Gripper



Hydraulic Hammer



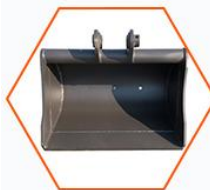
Quick Hitch



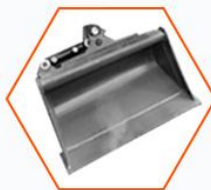
Thumb



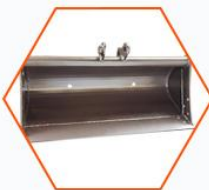
Narrow Bucket
200mm



Leveling Bucket
500mm



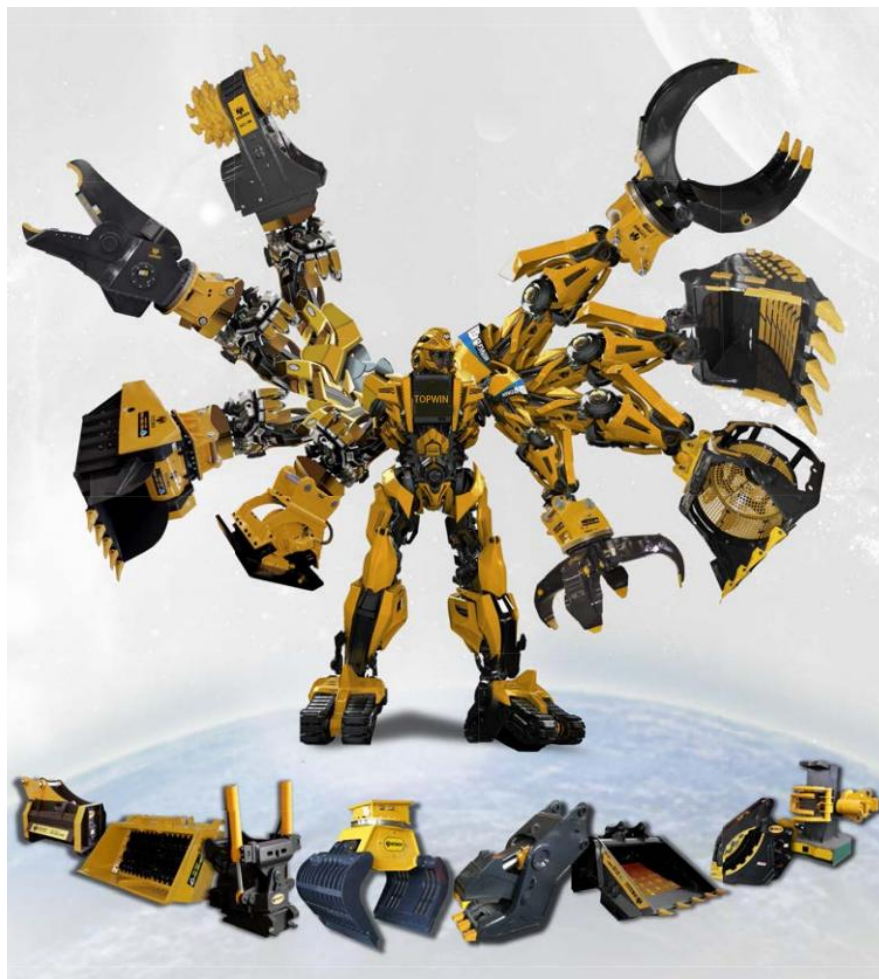
Tilting Bucket
800mm



Leveling Bucket
800mm



Tilting Bucket
1000mm







CERTIFICATE

ATTESTATION CERTIFICATE OF MACHINERY DIRECTIVE

Technical file of the company mentioned below has been observed
2006/42/EC Machinery Directive has been taken as references for these processes

Company Name : **Shandong Topwin Machinery Co., Ltd.**

Company Address : **No.12111, Jingshi Road, Lixia District, Jinan City, Shandong, China**

Related Directives and Annex : **Machinery Directive 2006/42/EC**

Related Standards : **EN ISO 12100:2010, EN 474-1:2006+A6:2019, EN 474-5:2006+A3:2013**

Product Name : **Excavator**

Report No and Date : **HY(21)040801-MD / 08.04.2021**

Product Brand/Model/Type : **E10, E06, E08, E12, E15, E16, E18, E20, E22, E25, E30, E35, E40, E45, E50, E55, E60, E65, E70, E75, E80, E90, E130, E135, E150, E180, E210, E220, E230, E250, E270, E300, E340, E360, E400, E460, E500, E520, E550, E700, E750, E900, E950, E1250, E2000, E2800, E50W, E75W, E85W, E135W, E150W, E210W**

Certificate Number : **M.2021.206.C63562**

Initial Assessment Date : **12.04.2021**

Registration Date : **13.04.2021**

Reissue Date/No : **-**

Expiry Date : **12.04.2026**

The validity of the certificate can be checked through www.udem.com.tr. The CE mark shown on the right can only be used under the responsibility of the manufacturer with the completion of EC Declaration of Conformity for all the relevant Directives. This certificate remains the property of UDEM International Certification Auditing Training Centre Industry and Trade Inc. Co. to whom it must be returned upon request. The above named firm must keep a copy of this certificate for 15 years from the registration of certificate. This certificate only covers the product(s) stated above and UDEM must be notified in case of any changes on the product(s)

Address: **Mutlukent Mahallesi 2073 Sokak (Eski 93 Sokak) No:10 Çankaya - Ankara - TURKEY**
Phone: **+90 0312 443 03 90** Fax: **+90 0312 443 03 76**
E-mail: **info@udemltd.com.tr** www.udem.com.tr


UDEM International Certification
Auditing Training Centre Industry
and Trade Inc. Co.

