

# NDI 150-9L

## Large excavator



Assembly covers all the advantages of similar products, and the performance of core components is strengthened again on the original basis to create higher value for customers.

### Product parameters

#### Body size

Total length of transport (mm)	7702
Overall width of transport (mm)	2602
Overall height of transport (mm)	2982
Machine working weight (kg)	14500
Bucket capacity (m <sup>3</sup> )	0.27-0.76
Boom length (mm)	4620
Track length (mm)	3497
Track full width (mm)	2600
Track shoe width (mm)	602
Back end turning radius (mm)	2202
Minimum ground clearance (mm)	408

#### Performance

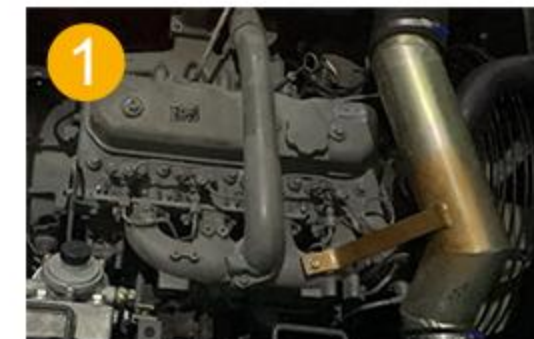
Swing speed (rpm)	11.9
Walking speed (km/h)	3.3-4.9
Bucket Digging Force (KN)	77.3/81.4
Stick excavator (KN)	57.7/63

#### Engine

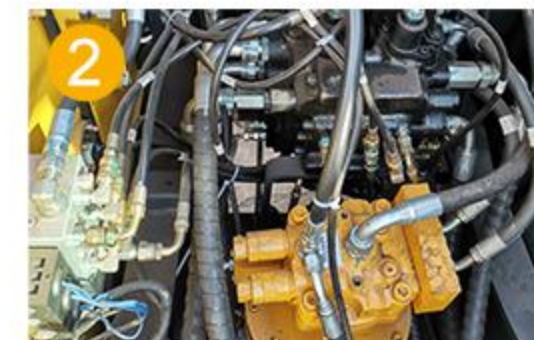
Engine model	Isuzu/Cummins
Rated power (kw/rpm)	75/1900
Cooling method	water cooling

#### Scope of work

Maximum excavation range (mm)	8742
The largest excavation range on the ground (mm)	8602
Maximum excavation depth (mm)	6132
Maximum excavator height (mm)	8952
Maximum discharge height (mm)	6532
Maximum vertical depth that can be excavated (mm)	4652



You can choose to be equipped with Doosan or Cummins engines, with strong and stable output power, which has been proven in the market.



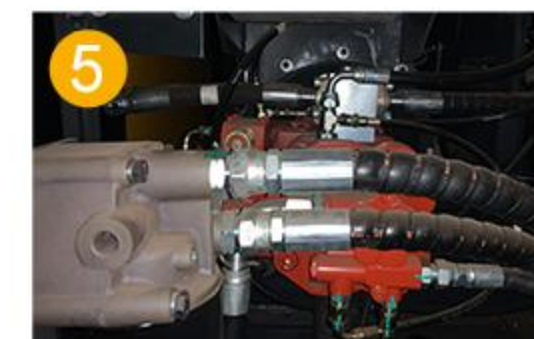
The central rotary motor adopts well-known foreign brands, with stable performance and durability.



The link of the big and small arms is strengthened, the plate is thickened, the production process is improved, and the welding type is changed to an integrated casting type.



The new seat adjustment mode, such as the car seat can be adjusted, the operation is more convenient



Hydraulic oil pump and other multiple oil filter systems enhance the fuel filter performance and greatly improve the fuel utilization rate.

