



**CONTENTS**



1. Bucket series



2. Quick Coupler series



3. Grapple series



4. Vibration series



5. Demolition series



6. Crushing series



8. Cutting series



9. Boom series



10. Electric control series



11. Loader series



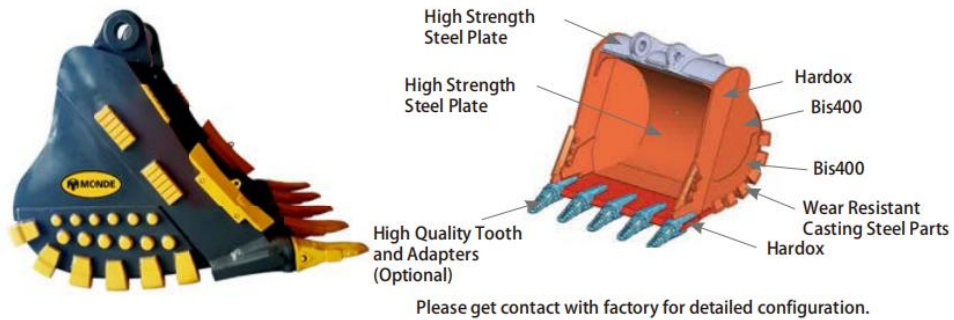
12. Bulldozer series



## Mine Bucket

### High Strength & Longer Service Life

On the basis of rock bucket, we add more welding steel plates at bottom of the bucket so that it is much more robust. It is made of China super high strength wearable steels, extending the durability by several times. They maximize products' reliability, excavation performance and economical efficiency. Digging earth with hard rocks, sub-hard stones and weathered stones and also can do heavy works, such as digging and loading solid rocks, blasted ores.



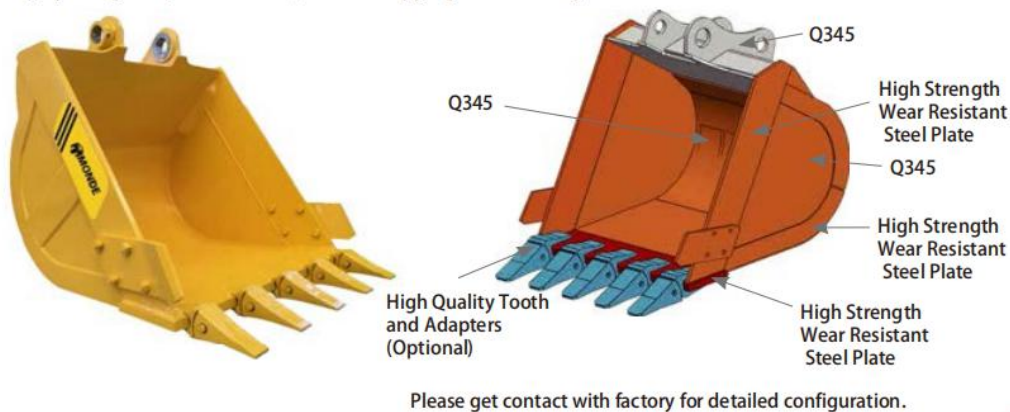
Bucket Type	Material	Configuration and Performance	Applicable Environment
Mine Bucket	Hardox+Bis400+Q460	Hardox plate for cutting edge and side cutter, Bis400 plate for side walls, and Weldom plate for bottom reinforcements. Welding wear-resistant blocks in side walls and using China high quality adapters to ensure the buckets with super wear-resistant and anti-bending capacity.	It is suitable for heavy loading operation, such as excavating of hard stones, secondary hard rocks, weathered granite, loading of ores after blasting and so on.

## Standard Bucket

### Specially used for digging soil

Large bucket capacity, large stowing surface, so it has high coefficient of fullness. Made of top quality structural and high strength steel, the adaptors are the domestic top quality products. So it can save work time and improve work efficiency.

Apply to light operation task, such as digging and loading hard soil or stones mixed with the soft soil.





Trenching Bucket



Skeleton Bucket



Front Bucket



Coal Pushing Shovel



Ripper Bucket



Thumb Bucket



Dustpan Bucket



Trapezoidal Bucket



Tamping Bucket



Tilt Bucket Front



Tilt Bucket Back



Slope Bucket

Material	Code	Main Chemical Composition					Brinell Hardness (BH)	Tensile Stretch (%)	Tensile Strength (N/mm <sup>2</sup> )	Yield Strength (N/mm <sup>2</sup> )
		C	Si	Mn	P	S				
Manganese Steel Plate	Q345B	0.18	0.55	1.4	0.03	0.03	360	16	1200	1020
High Strength Steel Plate	Q460	0.20	0.55	1.5	0.035	0.035	380	17	550-720	1150

## Front Shovel Bucket

Our front shovel buckets are always custom-tailored according to customers' wishes. Use the best materials available on the market, such as Hardox 400 and 450 for the bucket shell, Hardox 500 for the wear plates. We can produce buckets with large capacity for famous brands excavators available on the market.



### Skeleton Bucket

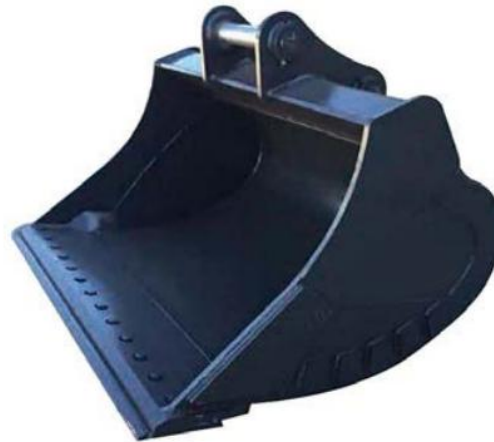
Skeleton bucket is great for sifting out rocks in soil, effectively mining and sorting rock and removing other debris without the soil. It is available in many different sizes, widths, and even custom rib spacing configurations, too.



Model	SKB50	SKB80	SKB120	SKB200	SKB300
Pin Diameter (mm)	φ 45	φ 50	φ 60/φ 65	φ 80	φ 90/φ 100
Ears Distance (mm)	170	220	260	340	390
Pin to Pin Center(mm)	260	310	360	465	530
Width(mm)	1200	1500	1500	1800	2000
Apply to(ton)	4-6	6-8	12-16	20-24	25-36

### Mud Bucket

Excavator mud buckets are wide and shallow to remove ditch sediment quickly and efficiently. Instead of cleaning ditches with a standard bucket, increase productivity by installing a mud bucket. Mud buckets include drain holes. Bolt-on edges are standard. This bucket is available in a wide-range of widths and capacities.



Model	MUD50	MUD80	MUD 120	MUD 200	MUD 300
Pin Diameter (mm)	φ 45	φ 50	φ 60/φ 65	φ 80	φ 90/φ 100
Ears Distance (mm)	170	220	260	340	390
Pin to Pin Center(mm)	260	310	360	465	530
Width(mm)	1200	1500	1500	1800	2000
Apply to(ton)	4-6	6-8	12-16	20-24	25-36

## Tilt Bucket

Increase the adaptability and productivity of your excavator with a Monde tilt bucket, which offers a cost effective and long lasting solution for work from the standard ditching and grading to backfilling and light material loading and handling.

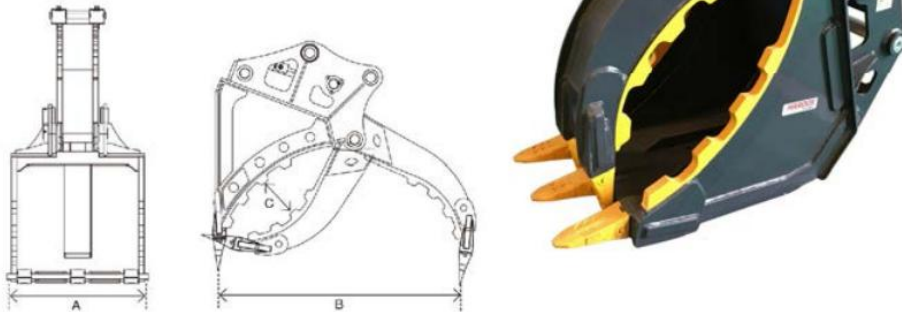


Model	TLB50	TLB80	TLB120	TLB 200	TLB 300
Pin Diameter (mm)	φ 45	φ 50	φ 60/ φ 65	φ 80	φ 90/ φ 100
Ears Distance (mm)	170	220	260	340	390
Pin to Pin Center(mm)	245	310	360	465	530
Dimensions (mm)	1200*788*916	1400*869*1008	1700*1074*1210	1900*1195*1478	2030*1362*1729
Apply to(ton)	5	6-8	12-18	20-24	25-36

## Thumb Bucket

Use Q345B/NM400 steel material, more wear-resisting and durable.

Used in a variety of applications including the handling of disposable waste, brush, logs, construction debris, stones, pipes, landscape works and many others.



Model	Apply to (ton)	Max Opening(mm)	Working Pressure (bar)	Oil Flow (L/min)	Weight(kg)
MGC80	6-8	1365	160	60	385
MGC120	12-16	1500	220	80	670

## Mechanical Grapple

Use Monde mechanical grapple to handle all sorts of materials in recycling or demolition applications using the strength of your excavator. It is available in a wide-range of widths and tine configurations. Each version made specifically for the user's needs. Monde grapple use a strategic arrangement of bearings, seals, o-rings, and collars in the main pivot to guard this critical area.



Model	MG50	MG80	MG120	MG200	MG300	MG400
Pin Diameter (mm)	φ45	φ50	φ60/φ65	φ80	φ90/φ100	φ110
Ears Distance (mm)	170	220	260	340	390	470
Pin to Pin Center(mm)	245	310	360	465	530	570
Width(mm)	640	690	700	950	1050	1400
Arm Length (mm)	1000	1000	1200	1800	1800	1800
Apply to(ton)	5	6-8	12-18	20-24	25-36	40-50

## Hydraulic Grapple

- \* Carrier size 3 tonne to 20 tonne excavators
- \* Various widths and sizes
- \* High strength steel materials and construction



Model	3T	5T	8T	12T	20T
Weight (kg)	255	365	435	720	1085
Max Opening Size (mm)	714	825	856	1035	1155
High(mm)	915	1012	1049	1190	1400
Width(mm)	590	673	715	830	1051
Length (mm)	590	635	677	943	964



## Wood Grapple

The grapple is widely used for handling, loading and unloading materials, such as sugarcane, wood, stone, steel slag, grabbing garbage, scrap metal and other special operations.



## Loader Grapple



## Demolition Grapple

This demolition grapple is an excellent tool for demolition of buildings made of bricks and wood, It's very handy in separating the materials from each other and in recycling them again or equally multi-functional for sorting and loading purposes.



Model	MDG06	MDG08	MDG15	MDG20	MDG30
Machine class (t)	4-6	7-10	11-17	16-23	25-40
Jaw Width (mm)	400	550	800	1000	1250
Max Opening (mm)	1000	1400	1800	2050	2400
Working Pressure (bar)	320	320	350	350	350
Oil Flow (L/min)	50	50	80	80	80
Weight (kg)	280	400	960	1450	2080

## Hydraulic Grapple

According to the function of hydraulic grapple, it can be divided into sugarcane, round wood, stone grapple, and so on; According to working principle, it has hydraulic grapple and mechanical grapple; According to the teeth, it has two teeth, five teeth, and seven teeth.

Hydraulic grapple is widely used for handling, loading and unloading materials, sugarcane, wood, stone, steel slag, grabbing garbage, scrap metal and other special operations.



Model	MWR10	MWR15	MWR20	MWR30	MWR35
Weight (kg)	390	740	1380	1700	1900
Opening Size (mm)	1400	1800	2300	2500	2500
Working Flow (L/min)	50-100	90-110	100-140	130-170	200-250
Apply to (ton)	7-11	12-16	17-23	24-30	31-40

### Single-cylinder Wood Clamp

The grapple is widely used for handling, loading and unloading materials, such as sugarcane, wood, stone, steel slag, grabbing garbage, scrap metal and other special operations.

- \* 360 ° rotary hydraulic excavator wood grapple
- \* Imported Sweden special steel material
- \* Better abrasion resistance and pressure resistance



Model	MWS-80	MWS-120	MWS-200
Apply to (Ton)	6-8	12-16	18-23
Max Opening (mm)	1000	1500	2350
Working Pressure (bar)	160	220	220
Oil Flow (L/min)	60	80	120
Weight (kg)	400	650	1100

### Mechanical Grapple

The mechanical excavator wood grapple is driven by the excavator bucket cylinder without the need to add additional hydraulic blocks and pipelines. The wood grapple is suitable for waste metal treatment, stone, wood loading and unloading and handling.



Model	FA-30	FA-50	FA-70	FA-120	FA-200
Applt to (Ton)	3-4	4-6	6-8	12-16	18-23
Opening Width (mm)	1050	1500	1600	1900	2200
Weight (kg)	125	200	310	510	970

## Multi Peel Clamp

Multi peel clamp is widely used for handling, loading and unloading materials, such as sugarcane, wood, stone, steel slag, grabbing garbage, scrap metal and other special operations.



Model	MPB-120	MPB-200	MPB-300	MPB-400
Machine Class (t)	10-15	16-23	25-36	38-50
Max Opening (mm)	1350	1960	2400	2600
Working Pressure (bar)	220	250	250	250
Oil Flow (L/min)	80	150	180	220
Weight (kg)	630	1500	1930	2230

## Clamshell Bucket

Clamshell bucket is the bucket that can open and close to grasp the sediment and all kinds of bulk cargo. It is a kind of spreader that mainly rely on the left and right two combined bucket or multiple jaw opening crawl and unloading material.

The grab overall structure is light and durable, offering high grabbing ratio, strong closing force and high material filling rate.



### Vibration Rammer

Hydraulic vibration rammer is mainly used with excavator, installed in the original bucket position on the front-end of boom, using the excavator's hydraulic drive and control. Simple structure, convenient in operation and maintenance. Applicable to a variety of terrain and a variety of operation ways. It can complete plane compaction, inclined plane compaction, the steps to consolidate, cement pits of groove and other complex foundation ramming processing.



Model	6T	13T	20T	30T
Working Flow(L/min)	20-40	40-60	60-80	80-120
Vibration Plate(mm)	700*480	844*850	1120*895	1350*1080
Working Pressure (mpa)	13-15	13-15	13-15	13-16
Dimensions (mm)	800*480*685	1000*850*838	1313*895*992	1578*1080*1128
Weight (kg)	300	570	960	1320

### Compaction Wheel

Supplying tough, hard-working, drum-style compaction wheels for excavators up to 45 tones. It is available in several configurations accommodating varying machine types , trench widths and soil types.



Model	CW80	CW120	CW200	CW300	CW400
Pin Diameter (mm)	φ 50	φ 60/φ 65	φ 80	φ 90/φ 100	φ 100/φ 110
Runner Diameter (mm)	φ 600	φ 600	φ 600	φ 900	φ 900
Runner Width (mm)	350	460	610	610	910
Weight (kg)	480	550	695	1330	1540
Apply to (ton)	6-8	12-18	20-24	25-36	40-50

## Quick Coupler

Quick coupler can greatly improve excavator performance. It can quickly connect each of special equipment and tools after assembling a quick coupler.



Model	MKY4T	MKY6T	MKY10T	MKY22T	MKY30T	MKY45T	MKY60T	MK75T
C.C Distance (mm)	86-200	230-270	380-420	460-480	473-540	510-580	620-710	600-800
Area Distance (mm)	86-185	155-170	232-315	306-340	375-411	420-510	580-670	620-750
Pin Dia (Φ)	25-40	45-50	50-70	70-80	80-90	100-110	110-120	120-140
Apply to (ton)	1.5-4	5-8	9-16	17-23	25-33	35-48	50-65	70-79

## Mechanical QC

Suitable for various brands of excavators, installation and use is very convenient, low maintenance costs. Especially suitable for large tonnage excavator, safe and reliable, economical and practical, can help you save a lot of cost. In addition, OEM service is available.



## Tilt Quick Coupler

Tilt quick coupler help excavator quickly connect bucket, grapple, ripper, mud bucket etc. No man work or remove pins, easy operate and save time. Tilt quick coupler is better than common hydraulic quick coupler, it can be locked when excavator do not work.

Advantage:

- \* Safe Release Curl to Open
- \* Lighter but Durable
- \* Save 25% of Operational Time
- \* Low Maintenance



## Universal Quick Coupler

Universal quick coupler is designed to deliver the power and durability for larger excavators. It can easily rotate the bucket to work with a reverse digging angle.

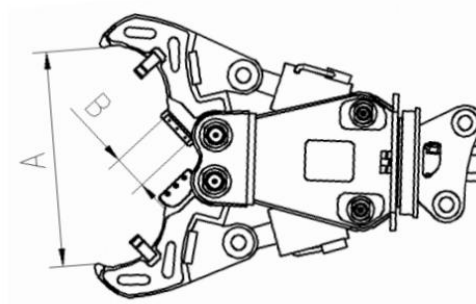
The Tilt rotator has a 360° endless rotation and tilting of up to 40°, available for excavators and backhoe loaders in the 3-30 tonne weight class.



### Hydraulic Cutter



Excavator multi-functional hydraulic cutter is the ideal tool in the rescue process. Double oil cylinder body is equipped with a variety of different structure of jaw, realizing the separation, shearing, removing in the rescue process, making the rescue higher working efficiency. Double oil cylinder is with large opening design, so the work is easy, convenient, flexible operation, and ensure powerful motivation of equipment. Work efficiency is two to three times of broken hammer, fully mechanized, safe and saving time.



Model	Excavator Weight(Ton)	Working Press(Mpa)	Opening Size A(mm)	Blade Length B(mm)	Front Crushing Force(KN)	Middle Crushing Force(KN)	Weight(kg)
MCR08	6-8	24	650	125	430	670	630
MCR12	12-15	31	780	240	725	1120	1480
MCR20	18-25	31	1000	240	1080	1610	2100

### Hydraulic Shear

Excavator multi-functional hydraulic shear is the ideal tool in the rescue process. Single oil cylinder body is equipped with a variety of different structure of jaw, realizing the separation, shearing, removing in the rescue process, making the rescue higher working efficiency. Single oil cylinder is with large opening design, so the work is easy, convenient, flexible operation, and ensure powerful motivation of equipment. Work efficiency is two to three times of broken hammer, fully mechanized, safe and saving time.

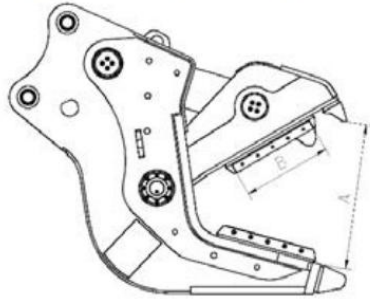


Model	MHS-80	MHS-120	MHS-200
Machine Class (t)	6-8	12-16	18-23
Max Opening (mm)	450	720	900
Working Pressure (bar)	270	320	320
Oil Flow (L/min)	80	100	150
Weight (kg)	550	1310	2100



### Hydraulic Pulverizer

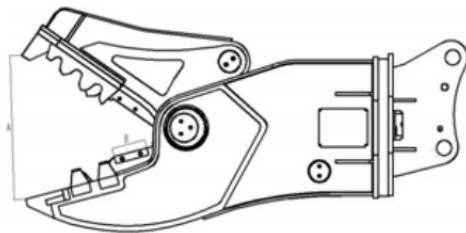
Excavator pulverizer is a convenient and fast tool for dismantling equipment, with strong crushing ability, which can decompose reinforced concrete quickly, demolition of buildings such as beams and pillars of apartment buildings, with super size serrated teeth, the design of teeth reinforced by the occlusal surface, large crushing area and high crushing efficiency.



Model	Excavator Weight(Ton)	Working Press(Mpa)	Opening Size A(mm)	Blade Length B(mm)	Front Crushing Force(KN)	Middle Crushing Force(KN)	Weight(kg)
FSQ13	12-15	31	600	350	605	1340	850
FSQ20	18-25	31	850	510	980	1560	1900

### Hydraulic Rotary Pulverizer

Hydraulic pulverizer, mainly used for demolition separation of the reinforced engineering. Jaw teeth are made into special shape to firmly fix concrete blocks, wedge and crush for quick crushing. Inside with a steel bar cutter, the hydraulic pulverizer can cut off and crush the concrete exposed reinforcement at the same time, also can relocate the building, houses and other building directly, making the crushing efficiency higher. Hydraulic pulverizer forceps mouth is wide, bite is big, which can fit for a variety of tonnage excavator.



Model	Excavator Weight(Ton)	Working Press(Mpa)	Opening Size A(mm)	Blade Length B(mm)	Front Crushing Force(KN)	Middle Crushing Force(KN)	Weight(kg)
MSH10	12-15	31	610	190	530	1150	1050
MSH18	18-25	31	735	180	860	1360	1800

**Ueda Steel Plate Magnet**

Using 24V electromagnet, direct power supply from the battery of the excavator. It can be 360 degree rotation. The tiltable magnet and body is able to ensure the steel plate is being attracted by the magnet stably. The safety clamp can help to hold the steel plate. Drain line is not necessary.



Model	KMG-200
Excavator Weight (t)	20
Voltage (v)	24
Electric Current (kw)	48
Max. Lifting Board Size (mm)	1550(L)*6000(W)*22(H)
Oil Pressure (Mpa)	20.6
Rotation (° )	360
Dimensions (mm)	1220(L)*760(W)*1060(H)
Weight (kg)	1170

**Ueda Wood Saw Cutter**



**Advantages**

This type of wood saw cutter is mechanical structure, the movable saw blade is using the power of arm cylinder. The sharp cutting power with our own special saw design. The drain line is not necessary.

Model	FWV-70	FWV-120	FWV-200
Excavator Weight (t)	6~7	12~13	20~22
Cutter Blade	Saw blade	Saw blade	Saw blade
Max. Opening Size Width(mm)	410	820	1000
Max. Cutting Dia.(mm)	300	500	600
Dimensions (mm)	1500*390*980	2170*480*1450	2500*620*1650
Weight (kg)	900	1220	1950

**Rotating Screening Bucket**



Model	MSB02	MSB08
Machine Class ( t )	2-4	6-10
Rotary Screen Diameter ( mm )	610	810
Rotring Speed ( r/min )	60	65
Working Pressure ( bar )	150	220
Oil Flow ( L/min )	30	60
Weight ( kg )	175	630

The MSB bucket comes equipped with an interchangeable mesh system around the drum inner circumference and replaceable sections in the conical rear area of the drum. Four models are offered to fit mini diggers from 6 tonne to 36 tonne excavators. Suitable for top-soil, quarried stone, remediation of contaminated soils beaches, demolition waste and green recycling duties. The MSB series is just at home clearing on a demolition site or in the quarry cleaning and sizing stone.



Hydraulic Breaker	Chisel Diameter	Suitable Carriers	Hydraulic Oil Flow	Hydraulic Oil Pressure	Impact Rate
SB20	45 mm	1.2~3 Ton	20~30 L/min	90~120 Kg/cm <sup>2</sup>	700~1200 Bpm
SB30	53 mm	2.5~4.5 Ton	25~50 L/min	90~120 Kg/cm <sup>2</sup>	600~1100 Bpm
SB40	68 mm	4~7 Ton	40~70 L/min	110~140 Kg/cm <sup>2</sup>	500~900 Bpm
SB43	75 mm	6~9 Ton	50~90 L/min	120~150 Kg/cm <sup>2</sup>	400~800 Bpm
SB45	85 mm	7~14 Ton	60~100 L/min	130~160 Kg/cm <sup>2</sup>	400~800 Bpm
SB50	100 mm	10~15 Ton	80~110 L/min	150~170 Kg/cm <sup>2</sup>	350~700 Bpm
SB70	135 mm	18~26 Ton	130~150 L/min	160~180 Kg/cm <sup>2</sup>	400~800 Bpm
SB81	140 mm	18~26 Ton	120~180 L/min	160~180 Kg/cm <sup>2</sup>	350~500 Bpm
SB81A	140 mm	18~26 Ton	120~180 L/min	160~180 Kg/cm <sup>2</sup>	350~500 Bpm
SB100	150 mm	27~35 Ton	150~190 L/min	160~180 Kg/cm <sup>2</sup>	350~700 Bpm
SB121	155 mm	28~35 Ton	180~240 L/min	160~180 Kg/cm <sup>2</sup>	300~450 Bpm
SB131	165 mm	30~45 Ton	200~260 L/min	160~180 Kg/cm <sup>2</sup>	250~400 Bpm
SB151	175 mm	40~55 Ton	210~290 L/min	160~180 Kg/cm <sup>2</sup>	200~350 Bpm

Drum cutter



Orange peel grapple



Pile hammer



Crusher bucket



Rake A Type



Rake B Type



Rotating Grab Bucket



Non-rotating Grab Bucket

## Brick clamp

### Fork lift



Excavator Clamp Arm



## Ripper





## Stump Planers



### **STUMP** RSP250 PLANER

#### EXCAVATORS 1-5 TON & SKID STEERS

Earth Drill Compatibility	REA2500-4500
Diameter	250mm
Length	635mm
Hub Options	65 Round
Unit Weight	25kg

Technical data may be subject to change without notice



### **STUMP** RSP350 PLANER

#### EXCAVATORS 4.5-8 TON & HIGH FLOW SKID STEERS

Earth Drill Compatibility	REA5000-8000
Diameter	350mm
Length	675mm
Hub Options	75 Square
Unit Weight	33kg

Technical data may be subject to change without notice



### **STUMP** RSP450 PLANER

#### EXCAVATORS 6-15 TON & HIGH FLOW SKID STEERS

Earth Drill Compatibility	REA10000-15000
Diameter	450mm
Length	150mm
Hub Options	75 Square
Unit Weight	52kg

Technical data may be subject to change without notice