



K1000E ELECTRIC LOADER SPEC SHEET



Features:



Lead-acid Battery



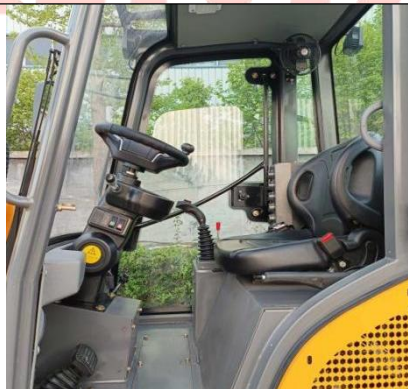
Unique Articulation



Axles with Reducer



Controller



Luxury Cabin



Electric Joystick

Specifications:

Performance	Model		K1000E
	Rated Load (kg)		1000
	Bucket rated capacity (m) ³		0.26
	Max. Dumping height (mm)		1870
	Max. Lifting Height (mm)		3185
	Max. Dumping Reach (mm)		746
	Max. Grade ability		20
	Max. Turning Angel		29°±1
Dimensions. & Weight	Overall Dimension (L×W×H) (mm)		3960*1320*2390
	Wheel base (mm)		1100
	Min Ground Clearance(mm)		210
	Net Weight (kg)		2360
Battery	Battery Model No.		3-EVF-200A
	rated capacity (3hr)		200Ah
	No.of battery groups		12
	Rated Voltage		72
	Working hours (h)		4h
Transmission System	Hydraulic System	Motor No.	YQP5.72AF.48P
		Voltage	72V
		Power	5000W
	Tyres	Displacement (ml/r)	14
		Type	29*12.50-15
		working pressure (mpa)	0.3
Steering System	Type of Steering Hydraulic System		Full Hydraulic Steering System
	System Pressure (mpa)	16	
	Type of Steering Pump	External Gear Pump	
	Steering Cylinder Bore (mm)	Ø75	
	Qty (pc)	2	
Braking System	Service Brake		Drum Brake
	Brake Drum (mm)		240
	Parking Brake		Drum Brake
	Distribution Valve	Model	DL10
		Type	Triple valve stem
	Dumping Cylinder-Bore		Ø80
	Lifting Cylinder-Bore		Ø90
Oil Capacity	Hydraulic Oil Tank (L)		54
	Brake Fluid (L)		0.8