

Ndi 230-9L

Large excavator



Performance and fuel consumption are in an ideal balance, adapt to various working conditions, undertake more projects for customers, and achieve greater value.



Product parameters

Body size

Total length of transport (mm)	9510
Overall width of transport (mm)	2900
Overall height of transport (mm)	3030
Machine working weight (kg)	21500
Bucket capacity (m ³)	0.5-1.28
Boom length (mm)	5700
Track length (mm)	4440
Track full width (mm)	2990
Track shoe width (mm)	600
Back end turning radius (mm)	2750
Minimum ground clearance (mm)	480

Performance

Swing speed (rpm)	12.4
Walking speed (km/h)	3.1-4.5
Bucket Digging Force (KN)	136.2
Stick excavator (KN)	97

Engine

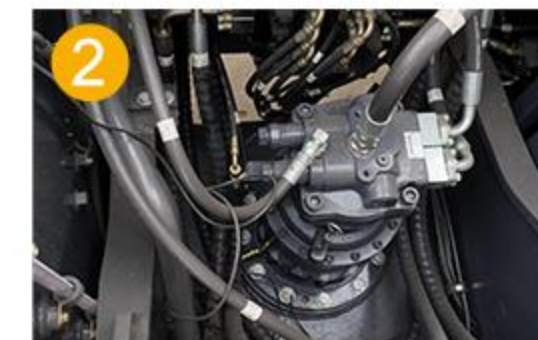
Engine model	Cummins
Rated power (kw/rpm)	110/1950
Cooling method	water cooling

Scope of work

Maximum excavation range (mm)	9910
The largest excavation range on the ground (mm)	9735
Maximum excavation depth (mm)	6445
Maximum excavator height (mm)	6045
Maximum discharge height (mm)	6810
Maximum vertical depth that can be excavated (mm)	6045



You can choose to be equipped with Doosan or Cummins engines, with strong and stable output power, which has been proven in the market.



The central rotary motor adopts well-known foreign brands, with stable performance and durability.



Hydraulic oil pump and other multiple oil filter systems enhance the fuel filter performance and greatly improve the fuel utilization rate.



Diversified information about equipment operation and increased customer convenience through high-tech color LCD display system



The crawler of the strengthened structure increases the stability of the lower body and greatly improves the structural strength of the chassis.